

Section 15

Wednesday Race Instructions

Category 7 Races in the Estuary

1 Objectives for these Events.

- (a) To promote and encourage participation in sailing, and to promote Port Hacking Sailing.
- (b) Non-PHS members are also welcomed to compete for individual race prizes.
- (c) PHS members only are eligible for the perpetual trophies.
- (d) Participants should show courtesy towards other boats and give them their due rights under the rules.

2 Amended Rules for the Event.

- (a) Category 7 (AS Special Regulations Part 1 Section 2).
- (b) Additional Item: All boats, which do not have navigation lights permanently fitted, are additionally required to comply with AS SR 3.23.4 and 3.23.5 and carry portable navigation lights capable of being attached to the boat.
- (c) At least one means of serviceable electronic communication, which may be a mobile phone, is required to be carried on vessels participating in Category 7 races.
- (d) Non-Spinnaker race. No sail may be set forward of a mast which are not normally carried forward of that mast when working to windward. Any sail set forward of a mast shall not be set flying.
- (e) A Duty Officer or their nominee will be in control of this event and will check that all boats return home.
- (f) The Duty Officer or their nominee may mediate on rule breaches they witness on the water or protests brought to their attention after the race. All parties will be given the opportunity to give their account of the incident to the mediation hearing. The outcome will be announced prior to the race results after the race.
- (g) The time limit for a protest is two hours after the protesting yachts finish.
- (h) Boats must keep at least one boat length from moored boats or moorings.
- (i) Boats may exonerate rule breaches on the water by completing a 360° turn as soon as possible and clear of other boats. A three-place penalty may be applied after mediation subject to all parties agreeing.

3 Summary for Wednesday Sailing Events

- (a) These events will be governed by the ISAF Racing Rules of Sailing as amended and the Maritime rules.
- (b) All participants must complete the ON LINE entry form and pay the entry fee when accepted.
- (c) The competition is open to Skippers who belong to a AS affiliated yacht club and have a current Australian Sailing Number (ASN).

- (d) Yachts racing regularly will be encouraged to join the RMYCPH and Sailing.
- (e) All participants must provide a valid category 7 audit with additions and Insurance papers.
- (f) All participants must have knowledge of the COLREGS.
- (g) All participants must understand the NSW Waterways requirements in case of accidents.
- (h) Boats shall carry navigation lights and shall illuminate them after official sunset
- (i) Boats must avoid collisions, irrespective of individual rights.
- (j) Yachts not given their rights must signal with a red flag, in the racing area that she was involved in or saw, she shall hail 'Protest' and conspicuously display a red flag at the first reasonable opportunity to give the other boat an opportunity to exonerate their error with a 360° turn.
- (k) A protest committee may protest a boat if it learns of an incident involving her that may have resulted in injury or serious damage or blatant breaches of the rules as per Rule 60.3. This includes unprotested collisions.
- (l) The protest flag shall be Code Flag "B" or a "Red" flag.
- (m) Mediation will be available after the race. If the parties are still at 'variance' a protest meeting will be provided without prejudice.
- (n) The Race Committee may refuse the entry of any yacht in any race conducted by the club in accordance of RRS 2017-2020 rule 73.
- (o) Races will be cancelled as per the details in Section 7.

4 Race Dates and Starting Times

Newton Real Estate series – 2020/2021

SELLING season series	start 5:30pm	Oct 7 th , 14 th , 21 st , 28 th and Nov 4 th .
INVESTMENT Series	start 6pm	Nov 11 th , 18 th , 25 th , Dec 2 nd , 9 th and 16 th .
Christmas holiday break		
WINDS of real estate Series	start 6pm	Jan 13 th , 20 th , 27 th , Feb 3 rd , 10 th and 17 th .
POTENTIAL Plus series	start 5:30pm	Feb 24 th , Mar 3 rd , 10 th , 17 th , 24 th & 31 st .

Perpetual Trophy for overall. Prize for four individual series.

Prizes and meat tray for individual races.

Infinity Rigging- Wednesday Afternoon Overall Series - 2021

All Wednesdays throughout Eastern Standard Time. Nominal starting time for first boat is 3pm AEST. First race – 7 th April 2021 and last race 29 th Sept 2021 Monthly series - April, May, June, July, August and September.
--

Perpetual Trophy for Overall series

AXS2 Voucher for winners of monthly series.

Meat tray for race winners.

Skippers should synchronise their watches to the Official Starting Time shown on the web or use GPS time.

Each yacht's start time will be shown on the web site prior to each race.

5 Starting Times (Pursuit starts)

Times of the last same named series will be used for the start of a new series. All new boats will be allocated an arbitrary starting time to be reviewed for 3 races. See www.sailing-rmycph.org.au >Racing (Twilight or Afternoon).

6 Finish Times and Recovery of Buoys

- (a) The winning boat to record places and pass to the Duty Officer.
- (b) The next eligible boats pick-up the laid marks.
If unable to pick up mark, arrange another yacht to do so.
- (c) Marks to be returned as notified via SMS from the Duty Officer. Instructions may also be on top of buoys. Otherwise to the sailing shed.

7 Adjustment to Yacht Times

16 & above – Times adjusted so 1st = +3, 2nd and 3rd = +2, 4th and 5th = +1.
The last 9 boats get -1 minutes.

Nine to 15 yachts - Times adjusted by +3, +2 and +1 to 1st, 2nd and third.
The last six places get -1 mins.

Five to eight yachts - Times adjusted by +2 and +1 to 1st and 2nd.
The last three places get -1 minutes.

Two to four yachts - First boat gets +1 last boat gets -1.

The aim above is to cause an average change of zero.

Yachts scored a DNC, DNS, DNF, DSQ, OCS or RET, have no change.

Times may be adjusted so that boats starts at the nominal starting time.

8 Scoring

Low point score system. 1st=1, 2nd=2 and so on, DNF=Starters +1, DSQ=Starters +2 and DNC=Starters +3.

9 Discards

- (a) **Summer** Overall Twilight Series - Three discards allowed. No discards in each individual series.
- (b) **Winter** Overall Afternoon Series - Four discards allowed. No discards in each monthly winter series.

10 Communications

Race instructions may be SMSed around 8am on the race day.

Changes to the race may be notified via SMS before the start.

Changes necessary on the water may be signalled by sounding a horn and/or broadcasting on VHF channel 73.

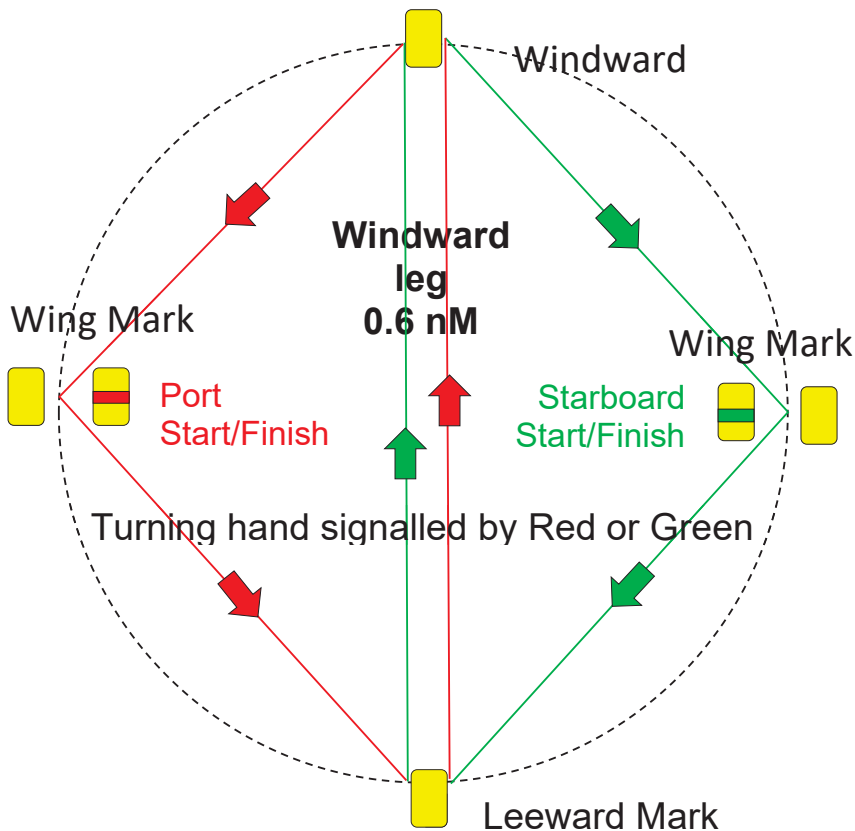
11 Shorten Course

If the leading boat hasn't finished within 1.5 hours of the nominated starting time or insufficient time for most yachts to complete before sunset, the finish will be signalled by the sounding of a horn when the leading boat is adjacent to the new finishing mark. A message may also be broadcast on VHF 73.

Start times & shortening races are managed to allow boats to finish before sunset.

12 Courses

Course Laid to Prevailing Wind



Marks

The course will move about the Estuary to cater for the current wind direction.

The windward leg will be set close to 0.6 nm.

The wing mark will be as close as possible to a right angle to the other marks.

Starting and Finish line

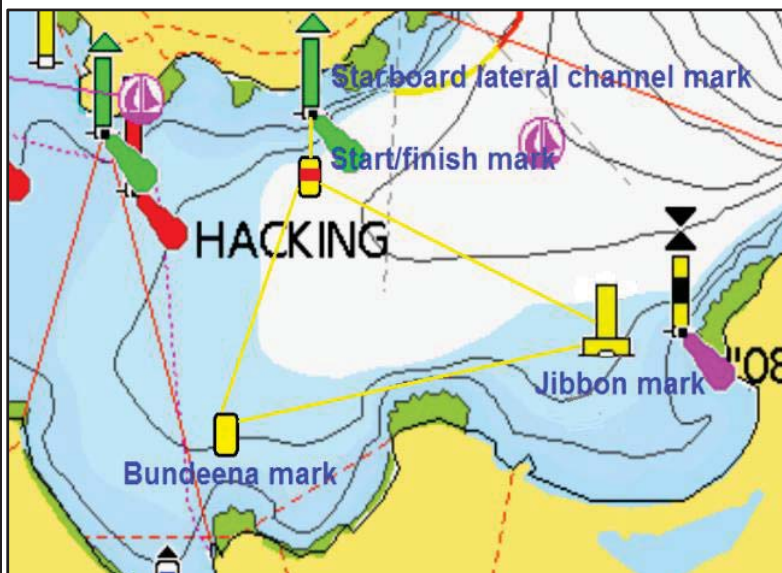
The start and finish line will be between the two wing marks.

Course and Direction

The course will be three triangles. The turning direction will be signalled by a red (port hand) or green (Starboard hand) band on the starting/rounding buoy.

Note: An alternate course may be used and signalled by using two laid marks.

Alternate Fixed Mark Course



Marks

The start/finish mark "SF" will be laid ~100m South of the starboard lateral channel mark.

Mark "J" is the permanent yellow pillar buoy off Jibbon beach.

Mark "BM" will be laid north of Bundeena at .6nM from mark "J".

Starting and Finish line

This line will be between the start/finish mark (SF) and the Starboard lateral channel mark below the Bass and Flinders obelisk.

Course and Direction

The course will be three triangles. The turning direction will be signalled by a red (port) or green (starboard) band on the starting buoy.

Note: The windward leg could be any of the three legs.