

Wednesday Twilight 2019-2020 (Minutes from nominal start)

Boat	R2	R3	R4	R5	R6	R7	R8	R9	R10	R12	R13	R14	R15	R16	R17	R19	R20	R21	Range
Mangrove Jack	15	14	14	13	13	13	14	13	12	14	17	16	16	15	14	13	15	15	4
If it Fits	21	21	20	20	20	21	20	20	20	20	20	19	21	23	22	23	23	22	4
Aeolus	12	9	9	8	11	10	11	10	9	11	11	12	11	10	11	10	9	11	4
L'attitude	20	19	19	19	19	18	17	17	18	21	20	19	18	19	22	21	21	21	4
Axiom	17	17	18	18	17	17	17	16	16	16	17	19	19	19	18	17	17	18	3
Whispering	10	14	13	12	12	11	10	11	13	12	11	11	12	11	13	12	12	11	4
Inception	11	11	11	10	11	13	12	12	14	13	13	12	11	10	9	9	9	8	6
Pandamonium	10	9	8	8	8	7	9	9	8	8	9	10	13	13	13	13	12	11	7
Frisky Too	23	20	20	20	22	21	21	21	21	22	21	20	19	19	21	21	21	21	4
Rhumb Line	16	16	12	14	13	12	15	14	17	16	16	15	14	14	13	13	13	13	5
Possible Dream	10	10	10	10	9	12	11	10	11	11	10	12	11	11	10	10	10	10	3
Kite Runner	19	16	19	20	19	19	18	18	20	20	20	20	20	20	20	20	20	20	4
Chinook	12	12	12	12	12	12	9	12	12	11	13	13	12	12	12	12	13	13	4
Crest	18	18	18	17	16	15	15	15	15	15	15	15	15	15	15	15	15	15	3
Majella	11	11	14	13	13	13	13	15	14	14	13	13	13	13	12	12	11	11	4
Sweet Chariot	10	10	10	10	10	10	10	10	10	11	10	9	11	11	10	12	11	10	3
Endless Summer	13	13	13	10	12	12	11	11	11	11	11	11	11	11	11	11	11	11	3
SteadFast	12	12	12	12	15	14	13	13	13	13	13	13	13	13	16	16	16	16	4

Course Data

Total distance 8045m

Average range of times = 4 minutes

Boats can't sail consistently enough to finish less than 1 leg behind leading boat.

Average time for small boat = 90 minutes

Average time for faster boat = 60 minutes

3 minute penalty for small boat = 258 metres

3 minute penalty for faster boat - 390 metres

3 minutes seems about right for course length and race time given the range of boats and performance in varying conditions and the fact we can't currently take finish times.

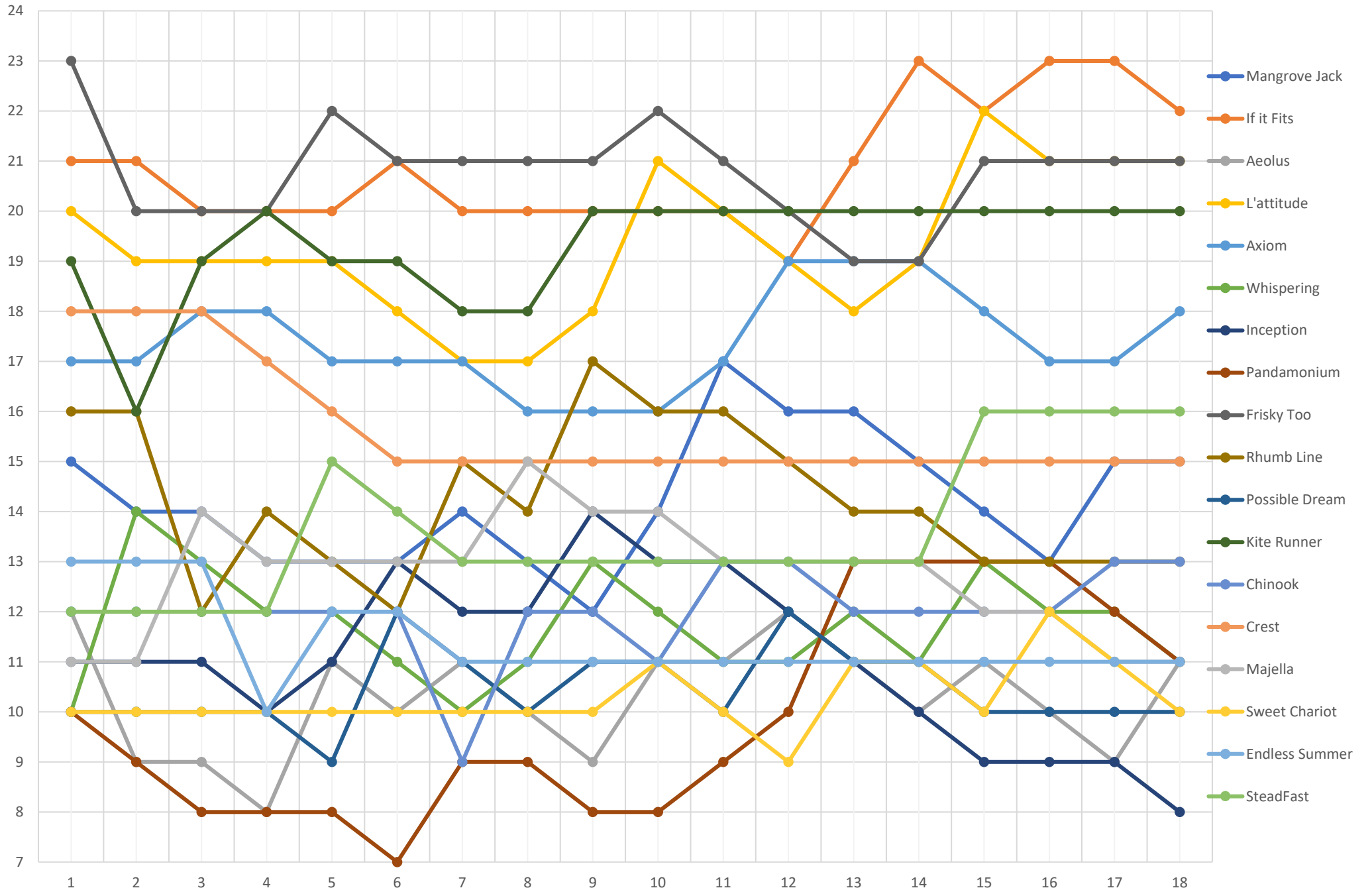
It is important that the total minutes added to leading boats equals the total number of minutes subtracted from the back boats to remove inflation.

Travels 86 metres per minute

Travels 130 metres per minute

Average penalty for 3 mins
324 metres or 1/2 final leg

Wednesday Twilight 2019-2020

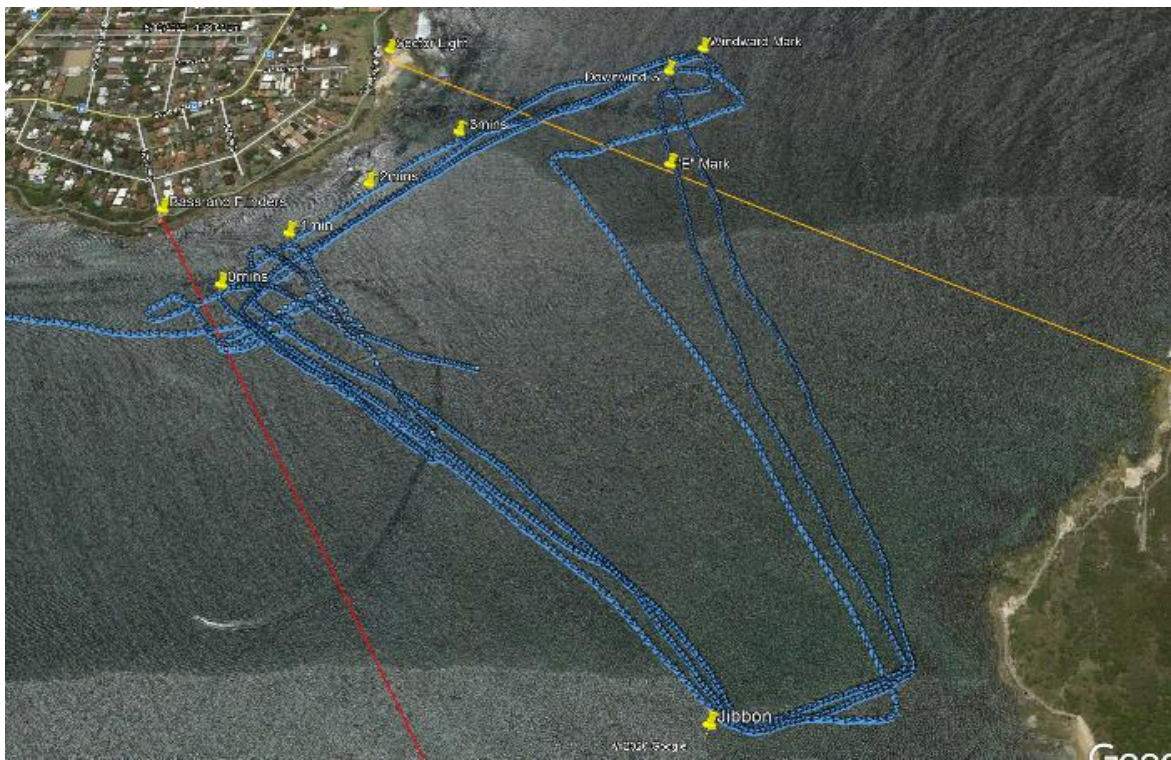


Race on 10-June-2020

Time marker for 3 minutes from finish.
Information from time marker from race logger.

L'attitude and if it fits within 1 minute.
Mangrove jack about 3 minutes back.
Bulk of fleet at windward mark.

Note: Final leg short - 3 minutes adjusted = half final leg.
Windward leg .55 nM
Final leg = .4nM



Races on 17-June-2020

Time markers for 3 minutes from finish.
Time track for Mangrove Jack used.

Wind strength say 18 knots

Windward leg .6 nM
Final leg .49 nM
1 minute = 180 metres

