

Section 10

Sunday Program and Instructions

Category 4 and 5 races

1 Amended Rules for the Event

- (a) Safety Category 5 (AS Special Regulations Part 1 Section 2).
Additional item: VHF fixed radio as per 3.25.4 or Hand-held VHF radio as per 3.25.6
- (b) A Duty Officer or their nominee will be in control of the on-water event and will verify that all boats return to port.
- (c) Courses 9 and 10 are amended when sailing under the control of the PHS Duty Officer to the descriptions given in section 10.4 and 10.5.
- (d) Harbour Races (HBR) are non-spinnaker series.

2 Summary of Rules for Category 5 Sailing Events

- (a) These events will be governed by the ISAF Racing Rules of Sailing (RRS), as amended and the Maritime rules.
- (b) All participants must complete the ON LINE entry form complete with audit document and proof of insurance and pay the entry fee when accepted.
- (c) All participants must have knowledge of the COLREGS.
- (d) All participants must understand the NSW Waterways requirements in case of accidents.

3 Radio

The race frequency is VHF73. Boats shall logon to the Duty boat within 30 minutes prior to the “Nominal” start time and remain on watch during the race. Course changes and shortening of the course may be advised on the race frequency.

4 Starting Line (Courses 9, 10 and Alternate 3, 4 and 5)

The start line is a transit line from the Sector light at Glaisher Point (lat. 34° 4.206's, long. 151° 9.394'e) through “Mark E” and extending towards Port Hacking Point.

Start between “Mark E” and Port Hacking Point

5 Start and Finish Line (Alternate Courses 1 and 2)

Between Starboard channel mark off Hungary Point to a Buoy with red band placed approximately 100m to the SW of the channel mark.

Start in direction to next mark. Finish in direction from last mark.

6 Summer Program 2020-2021

Race	Start	Date	Course	Nominal	Cat	Comment
		5-Sept-20				RMYC Opening Day
SO1	Scratch	13-Sept-20	20/46	11:30 AEST	4	Founders - Bell Buoy
HBR1	Pursuit	13-Sept-20	9/10/Alt	12:30 AEST	5	No-extras Founders race
SH1	Pursuit	27-Sept-20	9/10/Alt	12:30 AEST	5	Combined PHS fleet
NPS	Cruise	3/5-Oct-20	Coal	Coast Clssc	*	Labour Day Weekend
SH2	Pursuit	11-Oct-20	9/10/Alt	13:30 AEDT	5	Combined PHS fleet
SO2	Scratch	18-Oct-20	50/69	12:30 AEDT	4	Navigation Course
HBR2	Pursuit	18-Oct-20	9/10/Alt	13:30 AEDT	5	No-extras Harbour series
SH3	Pursuit	1-Nov-20	9/10/Alt	13:30 AEDT	5	Combined PHS fleet
SH4	Pursuit	15-Nov-20	9/10/Alt	13:30 AEDT	5	Combined PHS fleet
SO3	Scratch	29-Nov-20	21/26	12:30 AEDT	4	Two options
HBR3	Pursuit	29-Nov-20	9/10/Alt	13:30 AEDT	5	No-extras to suit SO turns
SH5	Pursuit	13-Dec-20	9/10/Alt	13:30 AEDT	5	Finish Spring series
NPS	Cruise	Xmas-NY	TBA		*	Christmas break
SO4	Scratch	10-Jan-21	62/23	12:30 AEDT	4	Two options
HBR4	Pursuit	10-Jan-21	9/10/Alt	13:30 AEDT	5	No-extras to suit SO turns
NPS	Scratch	16-Jan-21	TBA		4	Navigators Cup CSC
SH6	Pursuit	17-Jan-21	9/10/Alt	13:30 AEDT	5	Combined PHS fleet
NPS	Tues	26-Jan-21	Upriver	12:00AEDT	7	AustraliaDay-NoviceSkipper
	Pursuit	31-Jan-21	9/10/Alt	13:30 AEDT	5	Combined PHS fleet
SH8	Pursuit	14-Feb-21	9/10/Alt	13:30 AEDT	5	Combined PHS fleet
SO5	Scratch	28-Feb-21	68/69	12:30 AEDT	4	Two options
HBR5	Pursuit	28-Feb-21	9/10/Alt	13:30 AEDT	5	No-extras to suit SO turns
SH9	Pursuit	14-Mar-21	9/10/Alt	13:30 AEDT	5	Combined PHS fleet
SH10	Pursuit	28-Mar-21	9/10/Alt	13:30 AEDT	5	Finish Summer Series

7 Winter Program 2021 (All starts use pursuit times)

Race	Day	Date	Course	Nominal	Cat	Comment
	Sunday	9-May-21				Mother's Day
WTR1	Sunday	16-May-21	9/10/Alt	13:00 AEST	5	
	Saturday	22-May-21				Presentation night
WTR2	Sunday	30-May-21	9/10/Alt	13:00 AEST	5	
	Monday	7-Jun-21				Queen's Birthday
WTR3	Sunday	13-Jun-21	9/10/Alt	13:00 AEST	5	
WTR4	Sunday	27-Jun-21	9/10/Alt	13:00 AEST	5	
WTR5	Sunday	11-Jul-21	9/10/Alt	13:00 AEST	5	
WTR6	Sunday	25-Jul-21	9/10/Alt	13:00 AEST	5	Finish Winter Series

8 Finish Line (Courses 9, 10, Alternate 3, 4 and 5).

The finishing line will be an extension of the transit line from the Bass & Flinders Obelisk (lat. 34° 4.375's, long. 151° 9.210'e) to the starboard lateral marker pile situated below the Obelisk. Boats shall finish on the southern side of the Starboard Lateral mark, leaving it to starboard.

9 Finish Times and Places

Yachts should use "Race Logger" app. which will automatically SMS times. Check that Race Logger shows 'sent' for SMS finish. Otherwise notify finish time by SMS to 0418 253 479 giving (*Sail number, Yacht's name and GPS-hh:mm:ss*) or (*Retirement*) in accordance with Section 7.2 and Section 6.6.

10 Adjustment to Yacht Times

Each boat's elapsed time will be used to calculate the next race TCF, this is used to calculate the starting time for the next race as per the description in Section 9.


11 Scoring

Modified Low point score system. 1st=0.75, 2nd=2, 3rd=3 etc., DNF=Starters +1, DSQ=Starters +2 and DNC=Starters +3

The race prize goes to the first boat on corrected time.

The series points and trophies will be the results on corrected time.

12 Course Signals

The course will be signalled by course number or code flag "L" displayed on the red band of "Mark E". Code flag "L"  Come within hailing distance of the duty boat or listen for altered instructions on VHF 73.

13 Time Limit

The time limit for cat 5 will be three hours after the nominal start time.

The time limit for cat 4 is sunset modified as per section 6.9.

14 Recovery of Marks (Courses 9, 10 and Alternate course 3)

The 1st boat shall recover "Mark E" and the 2nd boat across the line shall retrieve "Mark C" (if laid), after the last boat has rounded or after the time limit.

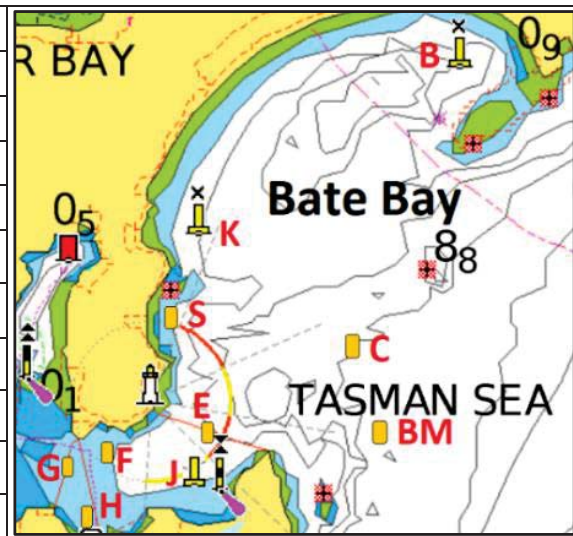
Alternate Course 1 and 2 – By boats placed 1st, 2nd, 3rd and 4th.

Return them to the PHS's storage shed or a nominated boat.




If unable to pick up mark, arrange another yacht to do so.

15 Marks (Summary of Section 12)

E	Estuary mark: Yellow with red band. .
B	Boat Harbour mark (Fixed mark)
C	Sea mark:
K	Kingsway mark (Fixed mark)
H	Horden Beach mark (Bundeena)
F	Fisheries mark (Salmon Haul)
S	Shark Is mark (Off Shelly park)
G	Start off Hungary Point
J	Jibbon Beach (Fixed mark)
Boats shall pass to seaward of Shark Is.	
Rounding (p) Port (s) Starboard	



16 Sunday Courses (Signalled on red band of Starting Mark)

	9 BATE BAY PASSAGE Summer: Start E, C(p), K(s), B(s), E(p), C(p), B(p) to B&F Fin. 11.25nM Winter: Start E to C(p), K(s), B(s), E(p), C(p) to B&F Fin. (7.95nM)
	10 BATE BAY PASSAGE Summer: Start E, B(p), K(p), C(s), E(s), B(s), C(s) to B&F Fin. 11.25nM Winter: Start E to B(p), K(p), C(s), E(s), C(s) to B&F Finish. (7.95nM)
Code	ALTERNATE COURSES - Code flag "L"
Flag	Alternate 1: (8.3nM unable to race in Bate Bay).
L	All Divisions: Start line at Hungary Point to J(p), S(p), H(s), F(s), J(p), S(p), H(s), F(s), J(p) to finish off Hungary Point.
	Alternate 2: (Category 7 race - 8.3nM in the estuary). All Divisions: Start line at Hungary Point to J(p), E(p), H(s), F(s), J(p), E(p), H(s), F(s), J(p), E(p), H(s), F(s), J(p) to finish off Hungary Point
	Alternate 3: (unable to set C mark) Summer: Start E to B(p), K(p), E(p), B(p) to B&F Fin. 10.25nM Winter: Start at E transit line, B(p), K(p), E(p), K(p) to B&F Fin. 7.45nM
	Alternate 4: (K mark missing) Summer: Start at E transit line to B(p), E(p), B(p) to B&F Finish. 9.95nM Winter: Start at E to B(p), E(p), C(p), E(p), C(p) to B&F Fin. 8.55nM
	Alternate 5: (B mark missing or very light winds) Summer: Start E transit line to C(p), K(p), E(p), C(p), K(p), E(p), C(p), K(p), to finish transit line off Bass & Flinders obelisk. (7.65nM) Winter: Start E to C(p), K(p), E(p), C(p), K(p), E(p), C(p) to finish transit line off Bass & Flinders obelisk. (6.75nM).